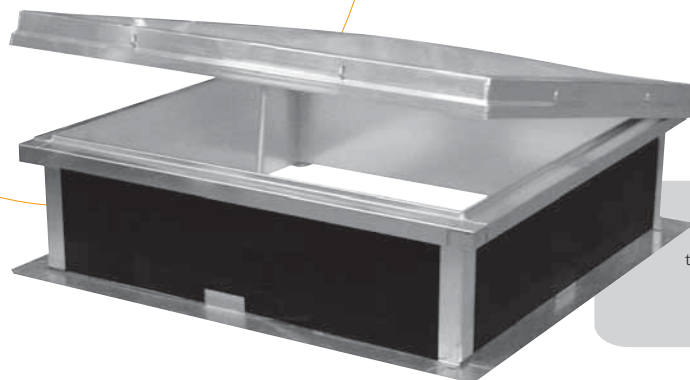


Waterproofed  
roof

# Hexasteel Treuil

Comfort range



Hexasteel Treuil is a skylight designed for the waterproofed roofs in order to carry out daily ventilation in the building. This product must be activated by a winch (sold separately).

Dimensions

Performances

References	Inner dimensions <i>in cm</i>	Lighting Surface (SLu) <i>in m<sup>2</sup></i>
C 50	50 x 50	0,25
C 60	60 x 60	0,36
C 70	70 x 70	0,49
C 80	80 x 80	0,64
C 85	85 x 85	0,72
C 100	100 x 100	1,00
C 120	120 x 120	1,44
C 130	130 x 130	1,69
C 140	140 x 140	1,96
C 150	150 x 150	2,25
C 160	160 x 160	2,56
C 180	180 x 180	3,24
C 200	200 x 200	4,00
50 x 100	50 x 100	0,50
70 x 100	70 x 100	0,70
100 x 140	100 x 140	1,40
100 x 150	100 x 150	1,50
100 x 200	100 x 200	2,00
140 x 200	140 x 200	2,80

The hinges are mounted in the longest side of the skylight.

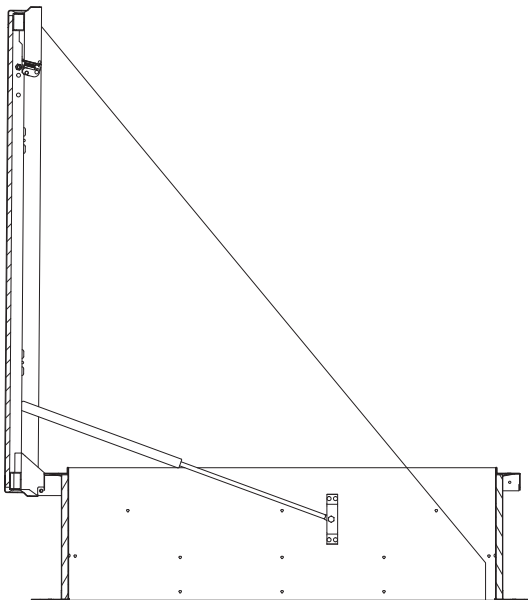
Waterproofed  
roof

Product line



# Hexasteel Treuil

Comfort range



Hexasteel Treuil open

#### COMPONENTS:

- A metallic upstand 30, 40 or 50 cm high, which can be equipped with an insulation board 15 mm ( $U_f = 2.5 \text{ W/m}^2 \text{ K}$ ) or 30 mm ( $U_f = 1.5 \text{ W/m}^2 \text{ K}$ ). The surface of the insulation can be bitumen or PVC coated for a direct weld with the waterproofing membrane.
- An aluminium frame which protects the periphery of dome or PCA.
- An opening mechanism:  
The opening power is given by one or two air-and-oil jacks integrated in the whole system. The opening and closing function is controlled from the floor by activating a winch which allows the rolling-up of the cable.

#### FILLING:

- Our standard:
  - PCA 10 mm 4 skins
- In option:
  - PCA 16 mm 7 skins
  - Double dome in PMMA, polycarbonate or Hexachoc 1200J
  - Insulated aluminium cover

*For additional details, see the rubric of the options.*

20

our solutions for  
the roof

adexsi Global solutions for lighting,  
daily and smoke ventilation