

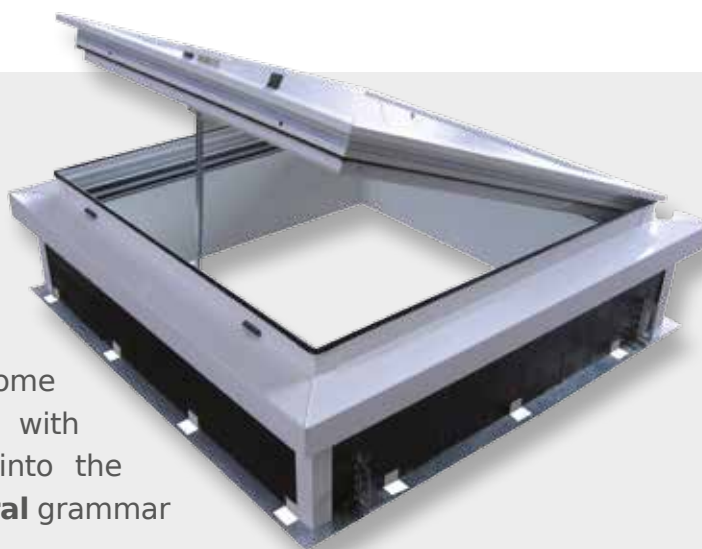
# PHONIAIR

ACOUSTIC SKY DOME WITH VENTILATION

## KEY FEATURES

**PHONIAIR** is a sky dome that tones harmoniously with the building and blends into the **aesthetic** and **architectural** grammar of its designer.

**PHONIAIR** also addresses **energy efficiency requirements** (*thanks to exceptional thermal insulation/soundproofing*) and the need for **daily ventilation** (*may be used for free or night cooling*).



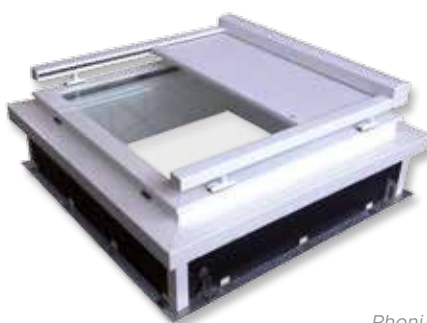
PhoniAir  
with mobile blind

## FEATURES

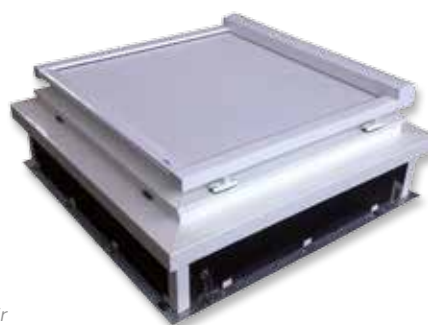
- **Single-piece** unit that is entirely assembled in the factory, intended for **all types of project**, whether **new build** or **renovation**
- Vent that combines an **acoustic solution with ventilation** and **overhead lighting**
- Compatible **with free and night cooling** and **SOI®** (*smart shading solution developed by SOUCHIER*)



PhoniAir  
with dome



PhoniAir  
with mobile blind



## PHONIAIR

### SKY DOME

#### PERFORMANCE

- Soundproofing:  $R_w$  39(-1 ; -2) dB
- Urc: 1.09 W/m<sup>2</sup>.K

#### DIMENSIONS

- **Length of opening:** 1000 mm
- **Height of opening:** 1000 mm

#### TYPES OF CONTROL

- Electric, using a chain actuator, 230 VAC

#### INFILL

- Soundproofed and thermally insulated glazing

#### OPTIONS

- Anodised finish
- Painting in all RAL colours
- Supplied with oblique or straight upstand
- Mobile blind with remote control (*compatible with SOI® technology*)
- Dome



11 rue des Campanules - CS 30066  
77436 MARNE-LA-VALLÉE cedex 02  
FRANCIA

T. + 33 (0)1 60 37 79 61  
F. + 33 (0)1 60 37 79 89

[WWW.SOUCHIER-BOULLET.COM](http://WWW.SOUCHIER-BOULLET.COM)



SOUCHIER - BOULLET reserves the right to change the composition and conditions of use of its materials without notice, based on advancing knowledge and techniques. Photographs and illustrations not contractual.

last update: May 2017

UNE SOCIÉTÉ  
adexsi

# PHONILUX

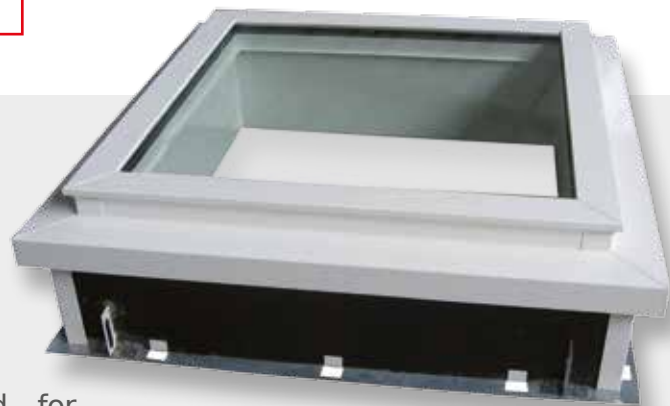
## ACOUSTIC SKY DOME

**HIGH THERMAL  
PERFORMANCE**

### KEY FEATURES

Fixed roof frame designed for **overhead lighting**, PHONILUX is a sky dome with **excellent soundproofing** and **thermal insulation**.

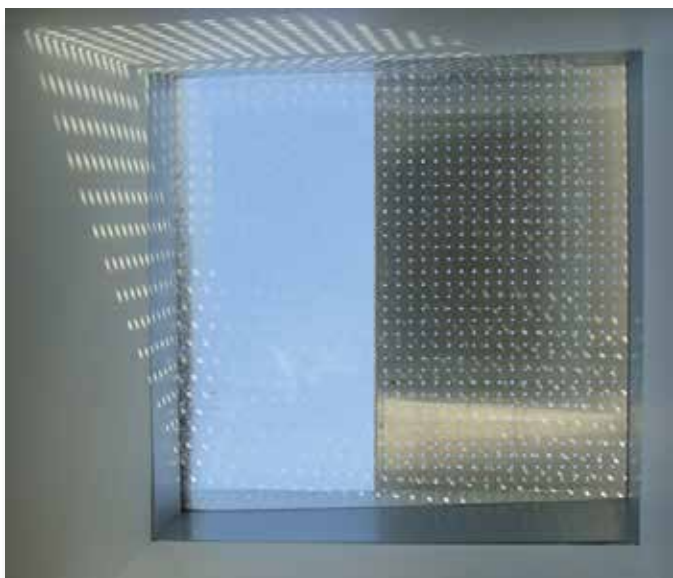
**PHONILUX** helps reduce the cost of artificial lighting **by maximising the use of natural light**. Thus it helps reduce the overall consumption of energy (*recommendations of Thermal Regulation 2012 - RT2012*).



*PhoniLux with dome*

### FEATURES

- **Single-piece** unit that is entirely assembled in the factory, intended for **all types of project**, whether **new build** or **renovation**
- **Thermal barrier** frame
- **Insulated upstand** in galvanised steel



The PHONILUX sky dome lets in natural light and optimises the overall energy management of the building.

## PHONILUX SKY DOME

### PERFORMANCE

- Impact resistance: 1200 Joules
- Soundproofing:  
Rw 40 (-1 ; -3) dB **without dome** (1600 x 1600 mm)  
Rw 38 (0 ; -2) dB **with dome**
- Rain noise attenuation:  
Lia 50 dB **without dome**  
Lia 48 dB **with dome**
- Urc 1.04 W/m<sup>2</sup>.K for 3000 x 1400 mm  
Urc 0.87 W/m<sup>2</sup>.K for 1000 x 1000 mm (with dome)

### DIMENSIONS *(length x height of opening)*

- **Min.:** 1000 x 1000 mm
- **Max.:** 3000 x 1400 mm

### INFILL

- Soundproofed and thermally insulated glazing

### OPTIONS

- Anodised finish
- Painting in all RAL colours
- Supplied with oblique or straight upstand
- Mobile blind with remote control (*compatible with SOI® technology*)
- Dome



11 rue des Campanules - CS 30066  
77436 MARNE-LA-VALLÉE cedex 02  
FRANCE

T. + 33 (0)1 60 37 79 61  
F. + 33 (0)1 60 37 79 89

[WWW.SOUCHIER-BOULLET.COM](http://WWW.SOUCHIER-BOULLET.COM)



SOUCHIER - BOULLET reserves the right to change the composition and conditions of use of its materials without notice, based on advancing knowledge and techniques. Photographs and illustrations not contractual.

last update: May 2017

UNE SOCIÉTÉ  
**adexsi**

# PHONIPACK

LEAF VENT

**VERY HIGH  
ACOUSTIC  
PERFORMANCE**

## KEY FEATURES

**PHONIPACK** is a **single-piece unit** with high acoustic performance. It combines, on a shared soundproofed base, a **two-leaf vent** (CERTILIGHT) and **two drop hatches** (remote control type).

PHONIPACK is intended for all rooms that require **high soundproofing values** and is suitable for **all types of roofing**.



## FEATURES

- It is designed for **all rooms that require high soundproofing performance** (*concert halls, auditoriums with amplification, cinemas, etc.*)
- It is suitable for **all types of roofing** (*waterproofed, dry, etc.*) in **new build and renovation**.



Le Métaphone (Oignies)

## PHONIPACK

ROOF NSHEV

### DESCRIPTION

• **PHONIPACK** is an assembly made up of the following:

- a **CERTILIGHT** roof vent with **CE - NF EN 12101-2** certification and **NF-NSHEV** marking (*natural smoke and heat exhaust ventilator*)

- and two **remote control** type hatches that comply with standard **NF S 61937-1**.

### PERFORMANCE

- Impact resistance:  
1200 Joules (*with grille*) for CERTILIGHT
- Reliability class:  
Re 1000 (+ 10000 ) / Dual function permitted
- Air flow performance: Cv 0.24 to 0.65  
*depending on dimensions and options*
- Soundproofing:  
Rw 55 (-2 ; -4) dB with pneumatic  
Rw 52 (-1 ; -3) dB with electric
- Snow load class:  
SL0, SL250, SL500 and SL1000

### DIMENSIONS (*made to measure*)

- **Overall height per frame:**  
**min.** 700 mm; **max.** 1600 mm
- **Overall width per frame:**  
**min.** 950 mm; **max.** 2530 mm
- **Av** (*formerly GA - Geometrical area*):  
**min.** 0.93 m<sup>2</sup>; **max.** 6 m<sup>2</sup>

### TYPES OF CONTROL

- Electric components
- Pneumatic



# PHONIPACK

## ROOF NSHEV

*The Métaphone is both a theatre and a "musical instrument" (the outer walls produce and project sound towards the outside along with light effects), and covers an area of 2000 m².*

LE MÉTAPHONE  
(Oignies)



## INFILL

Soundproofing of leaves:

- For the **upper structure**:
  - Aluminium covers that hold bitumen panels and fibreglass
- For the **hatches**:
  - Aluminium covers that hold bitumen panels and polyurethane foam

## PROFILES

- Thermal barrier frames

## OPTIONS

- Safety and standby position contacts (*safety option*)

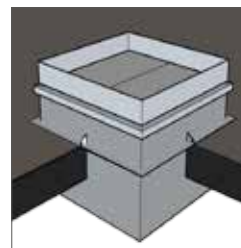
## APPLICATION

- PHONIPACK is lifted with a crane into the place set aside for it on the trimmer. The remaining space (*due to the fitting gap*) between the trimmer and the box is then filled with expanded insulating foam (*not supplied*) as recommended by the soundproofing specialist.
- The pneumatic or electrical connections (*controls and/or position contacts*) are provided at the base of the box.
- **IMPORTANT!** Take account of the weight of the ventilator while sizing the trimmers and selecting the crane.

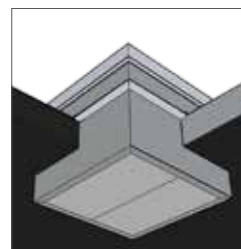
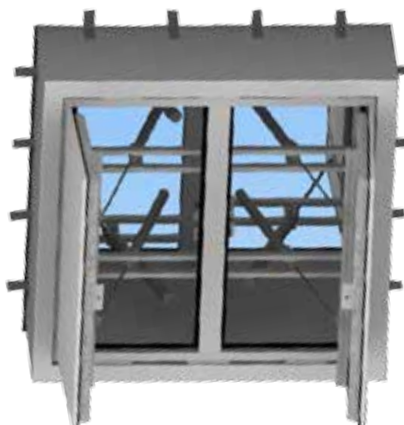
# PHONIPACK

ROOF NSHEV

PHONIPACK - *view from above*



PHONIPACK - *view from below*



11 rue des Campanules - CS 30066  
77436 MARNE-LA-VALLÉE cedex 02  
FRANCE

T. + 33 (0)1 60 37 79 61

F. + 33 (0)1 60 37 79 89

[WWW.SOUCHIER-BOULLET.COM](http://WWW.SOUCHIER-BOULLET.COM)



SOUCHIER - BOULLET reserves the right to change the composition and conditions of use of its materials without notice, based on advancing knowledge and techniques. Photographs and illustrations not contractual.

last update: May 2017

UNE SOCIÉTÉ  
**adexsi**



# PHONIPASS

## SOUNDPROOFED ROOF ACCESS

### KEY FEATURES

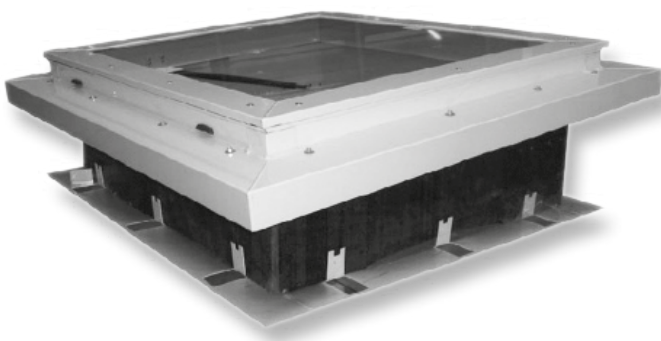
In addition to its function of enabling **roof access**, **PHONIPASS** has been designed to integrate fully into the most **demanding buildings** thanks to its high performance features.

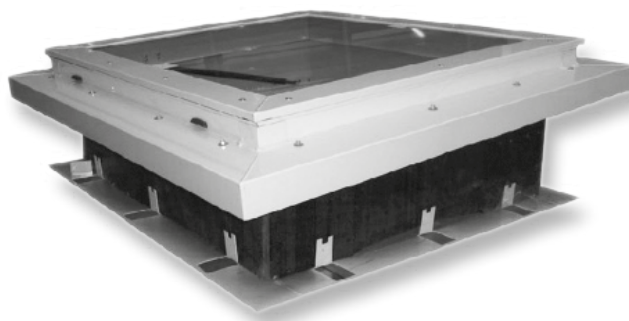
Its thermal insulation and soundproofing properties (*airborne noise and rain patter*) help **optimise the energy efficiency** of the building and keep its occupants **comfortable**.



### FEATURES

- **Single-piece** unit that is entirely assembled in the factory, intended for **all types of project**, whether **new build** or **renovation**
- Equipment that combines a **sound insulation solution** and provides **overhead lighting**
- **Easy roof access**
- **Thermal barrier** frame opens at 79°
- **Insulated upstand** in galvanised steel





# PHONIPASS

SOUNDPROOFED ROOF ACCESS

## PERFORMANCE

- Soundproofing:  $R_w$  38 (0 ; -2) dB
- $U_{rc}$  1.09 W/m<sup>2</sup>.K

## DIMENSIONS *(length x height of opening)*

- 1000 x 1000 mm

## INFILL

- Glazed or opaque
- Soundproofed and thermally insulated

## OPTIONS

- Anodised finish
- Painting in all RAL colours
- Supplied with oblique or straight upstand
- Ladder hanging bar
- Removable roof access bar
- Position contacts
- Dome



11 rue des Campanules - CS 30066  
77436 MARNE-LA-VALLÉE cedex 02  
FRANCE

T. + 33 (0)1 60 37 79 61  
F. + 33 (0)1 60 37 79 89

[WWW.SOUCHIER-BOULLET.COM](http://WWW.SOUCHIER-BOULLET.COM)



SOUCHIER - BOULLET reserves the right to change the composition and conditions of use of its materials without notice, based on advancing knowledge and techniques. Photographs and illustrations not contractual.

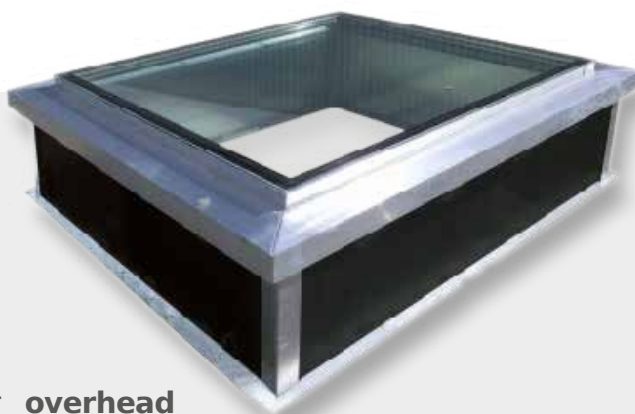
last update: May 2017

UNE SOCIÉTÉ  
**adexsi**

# PHONIVEC

## ACOUSTIC SKY DOME

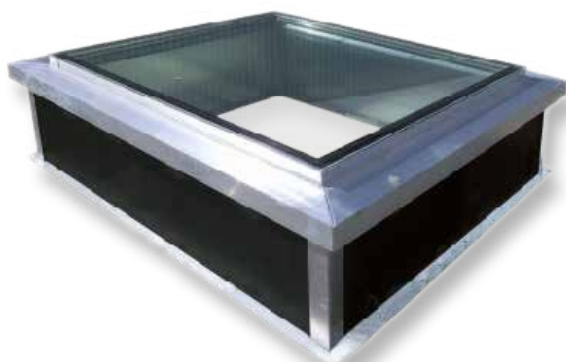
### KEY FEATURES



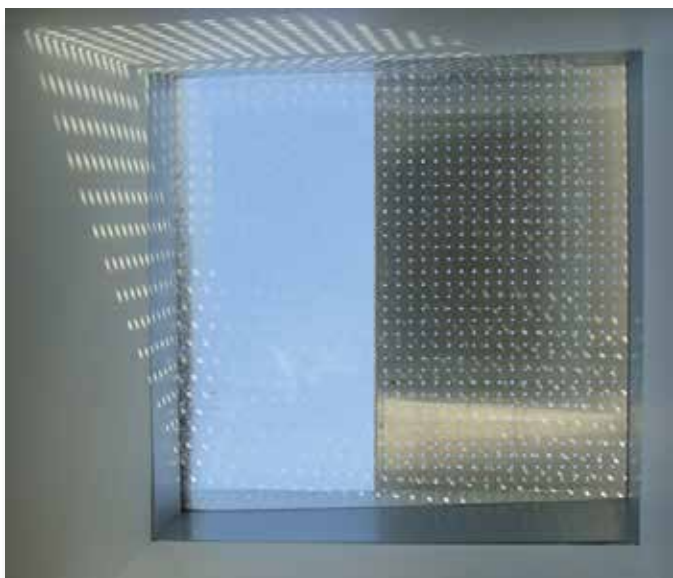
Fixed roof frame designed for **overhead lighting**, PHONIVEC is a glazed sky dome with **structural glazing finish** and **excellent soundproofing** and **thermal insulation**.

**PHONIVEC** helps reduce the cost of artificial lighting **by maximising the use of natural light**. Thus it helps reduce the overall consumption of energy (*recommendations of Thermal Regulation 2012 - RT2012*).

### FEATURES



- **Single-piece** unit that is entirely assembled in the factory, intended for **all types of project**, whether **new build** or **renovation**
- **Thermal barrier** frame
- **Structural glazing finish**
- **Insulated upstand** in galvanised steel
- Prevents the build-up of water on the glazing



The PHONIVEC sky dome lets in natural light and optimises the overall energy management of the building.

## PHONIVEC

### SKY DOME

#### PERFORMANCE

- Soundproofing:  
Rw 40 (-1 ; -3) dB
- Rain noise attenuation:  
Lia 47 dB
- Urc 1.07 W/m<sup>2</sup>.K for 3000 x 1400 mm  
Urc 1.12 W/m<sup>2</sup>.K for 1000 x 1000 mm

#### DIMENSIONS *(length x height of opening)*

- **Min.:** 1000 x 1000 mm
- **Max.:** 3000 x 1400 mm

#### INFILL

- Structural glazing, soundproofed

#### OPTIONS

- Anodised finish
- Painting in all RAL colours
- Supplied with oblique or straight upstand



11 rue des Campanules - CS 30066  
77436 MARNE-LA-VALLÉE cedex 02  
FRANCE

T. + 33 (0)1 60 37 79 61  
F. + 33 (0)1 60 37 79 89

[WWW.SOUCHIER-BOULLET.COM](http://WWW.SOUCHIER-BOULLET.COM)



SOUCHIER - BOULLET reserves the right to change the composition and conditions of use of its materials without notice, based on advancing knowledge and techniques. Photographs and illustrations not contractual.

last update: May 2017

UNE SOCIÉTÉ  
**adexsi**